



KNOWLEDGE

Alliance
Medical

Journey

YOUR

EXPERIENCE

IMAGING

LEAD

LEARN

PET-CT

Happy

diagnostics

INSPIRING

FUTURE

Radiography

Intelligent

QUALITY

SCAN

MRI

SYS#crmr_oc0

SA

5

WE CAN LEAD THE FUTURE

8kHz

sp

NEX

IP

W = 1018

Contents

4	Start here...
6	Electives
8	Undergraduate Training Placements
9	Our Locations
10	Look at our Graduate Schemes
12	Success Stories and Testimonials
14	Our Values... Your Future
16	Get in touch

LET'S GET STARTED....

Start here...

WELCOME TO YOUR FUTURE WITH ALLIANCE MEDICAL.

As Europe’s leading independent provider of imaging services, we set our standards high and when it comes to learning and careers, there’s only excellence in our minds.

We pride ourselves on helping students and employees develop the highest level of technical expertise. We invest in the very best technology and work in friendly supportive teams. We create a happy and productive working environment for everyone.

When you start your journey with us you become part of the Alliance Medical family and that means you’re supported every step of the way. What’s more, you will have access to many different opportunities and pathways throughout your time with us. We aim to help each and every one of you reach your full potential.

Whether you’re joining us on a placement, starting a new job or as a participant on our graduate scheme – we’ll take care of you on this exciting new adventure and give you the best possible start in your career.



“When you start your journey with us **you become part of the Alliance Medical family** and that means you are supported every step of the way.”



LEARN

Electives with Alliance Medical

CHOOSE US FOR YOUR ELECTIVE

Whether it's for a few days or a few weeks, we provide high-quality, hands on elective opportunities for you.

The right choice for you!

We are:

- Europe's leading independent provider of imaging services
- Close to your home or university
- Offering MRI and PET-CT electives
- Working in over 60 units in the UK and Ireland

What can Alliance Medical offer for your elective?

Alliance Medical consistently support Radiographers and Clinical Technologists in training and offer a flexible range of elective opportunities to ensure you find one that suits your aspirations.

Our electives will help you to develop real 'world of work' skills and connect with our network of Radiographers and Clinical Technologists. It also allows us to meet and encourage dedicated and talented Radiographers and Clinical Technologists at the start of their career.

Your options

We offer experience in MRI or PET-CT within our static and our mobile units; and other diagnostic specialist services, such as CT are available on request.

Your elective may include:

MRI

Introduction to MRI

- ▶ Basic MRI principles
- ▶ Patient preparation and safety
- ▶ Patient positioning
- ▶ Overview of equipment and coil handling
- ▶ Image quality - brain, knee and spine
- ▶ Procedures and protocols.

PET-CT

Introduction to PET-CT

- ▶ Basic PET-CT principles
- ▶ Patient preparation and safety
- ▶ Patient positioning
- ▶ Isotope production & Bio-distribution of the tracer
- ▶ Overview of equipment
- ▶ Procedures and protocols.

"My elective was brilliant, I learnt so much and made so many connections and friends."

MRI elective student 2018



How to Apply

STUDENTS...

It's so easy to apply with us, organise your elective today by emailing graduate@alliance.co.uk

Our dedicated team will put you in contact with one of our managers to discuss your requirements and process your request as quickly as possible.

In your email, tell us:

- Where you would like to be based (static or mobile and chosen location)
- Your preferred dates for the placement - we can offer anything from 1 day to a full week
- If you are a 2nd or 3rd year student.



WE ALSO OFFER:

Undergraduate training placements

What's that?
These are similar to your elective, but would normally run for a longer period of time and would form an official part of your course. They may cover MRI/CT or PET-CT during your 1st and 2nd year with more focused learning objectives in the 3rd year of study. All of this depends on the university you are studying at and if Alliance Medical have a collaborative partnership with them to enable you to undertake your placements with us.

Which universities do we work with?
We currently work in collaboration with the University of Cumbria and Sheffield Hallam to offer Undergraduate training placements to their students. We are in the process of working with other universities to build similar partnerships and networks for future learning.

If you are a University/Course Director interested in collaborating with us to help you deliver undergraduate training placements or if you are interested in discussing other partnerships or projects such as commercial ones then please contact our HR team on **01926 482 000**

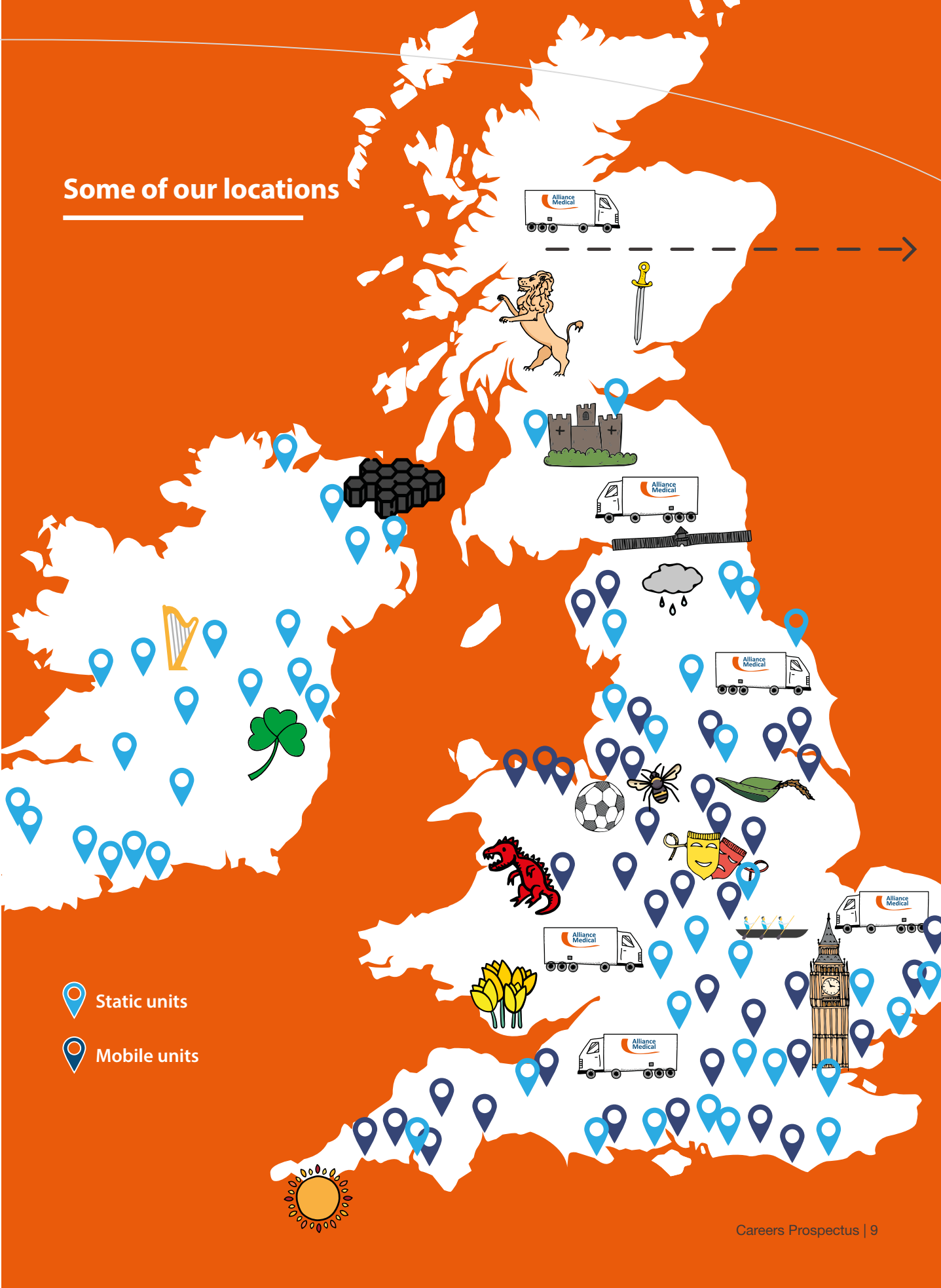


Careers Fairs
Keep an eye out for Alliance Medical at your University Careers fairs and come and chat to our friendly team - open up your future potential!

GETTING BETTER EVERY DAY



Some of our locations



→ Look at our Graduate Schemes

We're offering exciting opportunities to graduates at our mobile and/or static units across the UK and Ireland.

Our graduate scheme offers you a:

- ▶ Permanent contract of employment
- ▶ Competitive starting salary with key salary uplifts linked to skill progression
- ▶ Role providing hands-on, high quality, patient care
- ▶ Rotation through different clinical areas
- ▶ £1000 student loan contribution (taxable benefit)
- ▶ Host of employee benefits such as 5 weeks holiday, discounted private health insurance, pension plan and company car (dependent on role).



PLUS... Alliance Medical

- ▶ Invest in the most up-to-date technology, so you'll gain experience on the latest scanning equipment.
- ▶ Have access to The Academy of Advanced Imaging through the School of Oncology at Christie Hospital - providing bespoke courses, such as; Dementia Training, Managing of Patient Conversations, Intravenous and Radiopharmaceutical Training and Essentials of PET-CT.
- ▶ Offers all students IV Canulation Training.

Your kind of job...

You'll be joining Europe's leading independent imaging services provider, we look after our staff and our patients and strive to make a real difference through our work.

Successful applicants will become part of a dedicated and supportive team who are friendly, kind and highly skilled in their work. We offer an excellent work-life balance and promote a happy, healthy, open and honest work culture.

WHAT PATHWAYS DO WE OFFER?

We offer both MRI/CT and PET-CT pathways.

As soon as you start, we'll assign you a dedicated mentor who'll support you throughout the programme and a bespoke development plan will be created for you; set against core objectives of the programme.

Graduate scheme steps include:

- ▶ **0-6 Months** - Corporate and local induction and essential training
- ▶ **6-12 months** - Consolidation of and building upon your initial training
- ▶ **12-18 months** - Leadership development and advanced scanning techniques
- ▶ **2 years+** further responsibilities, career development and progression.

What will I get from the graduate programme?

The answer is... experience and opportunity. Both are essential to help you grow professionally.

We also ensure you receive continuous training to develop your skills for your future career with us. The scheme is designed to get the best out of you and you'll be given a challenging hands-on role, working in a diverse, working environment.

You'll be welcomed into the Alliance Medical family and encouraged to make your contribution to our organisation which is successfully built on teamwork and professionalism.

You'll be supervised and mentored with frequent reviews and receive excellent training tailored to your skills and what you're hoping to achieve in your career. There will be many opportunities for you to develop your expertise and secure valuable professional experience.

"Our facilities are second to none. We invest heavily in new machines and technology to stay at the forefront of diagnostics and to bring our patients peace of mind"

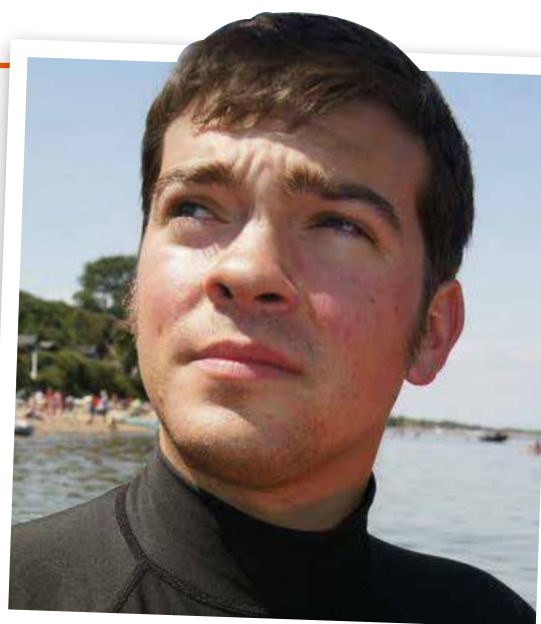
PET-CT Lead



Don't just take our word for it...

JAMES KEEN

- ▶ I have had the chance to work for Alliance in their static and mobile units and gain experience
- ▶ You form close bonds with your colleagues and real camaraderie is felt
- ▶ The varied opportunities Alliance Medical has offered has allowed me to take a key role in RIS/PACS development and various projects
- ▶ I am now a RIS specialist keeping our systems at the forefront of the Radiology market
- ▶ Alliance Medical expects hard work and high standards, but has always rewarded that with opportunities to further clinical expertise, work with great people, gain internationally recognised qualifications, pursue new career directions and progress into managerial roles.



ALWAYS ON AN ADVENTURE

LAURA HEMMINGS

- ▶ I joined Alliance Medical as a graduate in 2008 as a mobile CT Radiographer and was provided with a full CT training programme
- ▶ Two years later I cross trained into MRI and Dexa this added so much variety to my role
- ▶ A year later I was promoted to Senior Radiographer and completed my post graduate certificate in CT
- ▶ The following year I was successful in gaining a Regional Senior position, this involved managing scanning services and a team of Radiographers, this role provided me with invaluable experience. I have since completed courses in Radiographer led CT Colonography and CT Cardiac scanning
- ▶ Since then, I've decided to try something new, and Alliance Medical have fully supported me in becoming CT Clinical Lead.



LIVING THE FESTIVAL LIFE :)

... READ OUR SUCCESS STORIES AND TESTIMONIALS!

"It is fair to say Alliance Medical has encouraged and supported me in progressing in my career since the day I started, including granting a career break to go travelling and offering flexibility when I started a young family. I love my job."

"THE EXPOSURE TO MR/CT AND BEING ABLE TO LEARN WHILST WORKING HAS BEEN GREAT."

"Having a mentor was brilliant as you have a familiar face guiding you during your first few shifts which can be quite daunting as a newly qualified Radiographer."

"I can continue my career progression whilst still enjoying life. Alliance provides a perfect work life balance."

"Everyone that I have worked with has been willing to teach me and answer any questions."

"I FELT SUPPORTED AND PART OF THE TEAM."



*"I would never have had such an **opportunity to learn MRI/CT or PET-CT anywhere else.**"*

EXPERIENCE

→ **Our Values**

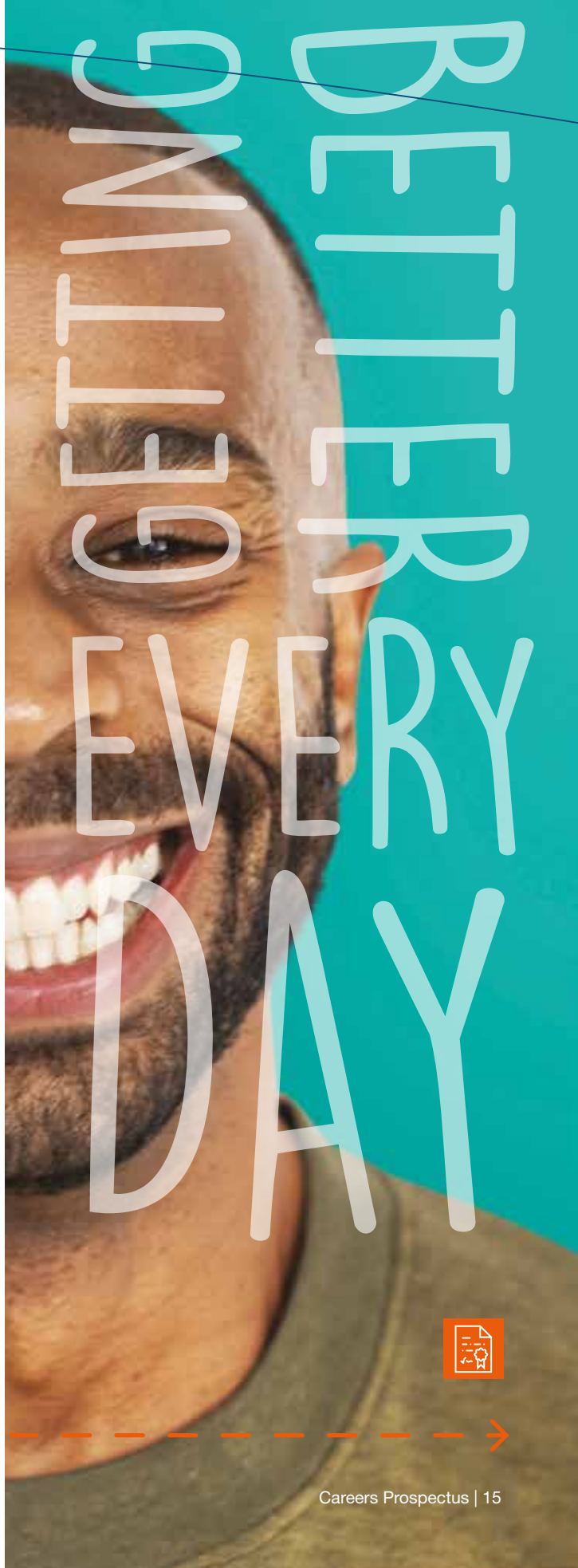
At Alliance Medical, our core values underpin all that we do. When you become a member of our team, you will join us in living these values every day, to ensure the best care for our patients.

- ▶ Collaboration
- ▶ Excellence
- ▶ Efficiency
- ▶ Learning

Your Future

If you look below the surface of any successful organisation, you'll find a great team and Alliance Medical is no exception. So, we work hard to reward and encourage your efforts with career and development opportunities.

- ▶ Alliance Medical has a comprehensive approach to continuing professional development.
- ▶ You'll receive a thorough introduction when you join our team, as well as countless opportunities thereafter to develop your knowledge and skills.
- ▶ This could range from enhancing your knowledge in a particular area through to secondment and project opportunities.
- ▶ We also offer supported learning via the Apprentice Scheme for a variety of courses related to your role.





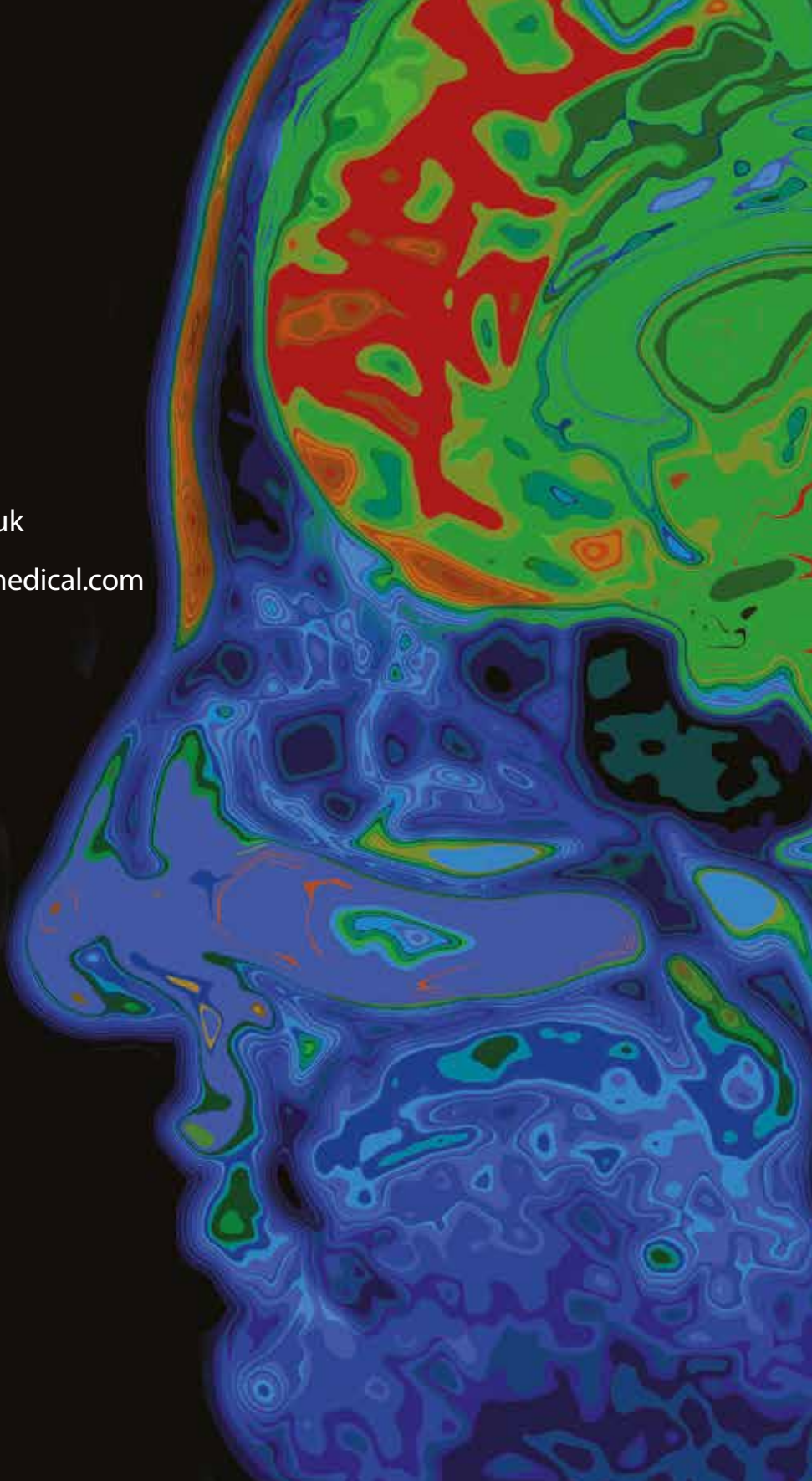
○ alliancemedical.co.uk

✉ graduate@alliancemedical.com

☎ 01926 482 000

🐦 [@alliancemedica1](https://twitter.com/alliancemedica1)

📘 [/alliancemedicaltd](https://www.facebook.com/alliancemedicaltd)



Get in touch...