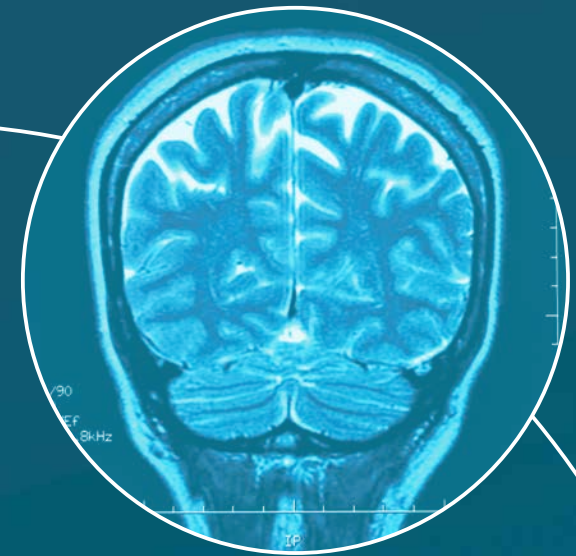


A smiling woman with blonde hair, wearing a light-colored medical uniform, stands with her arms outstretched. The background is a gradient of orange and red, decorated with numerous small yellow and white triangles of various sizes and orientations.

**MOVE
IN ANY
DIRECTION**

**YOUR GRADUATE
PATHWAY TO SUCCESS**

WE CAN LEAD THE FUTURE



CONTENTS

4	Start here...
6	Electives
8	Undergraduate Training Placements
9	Our Locations
10	Look at our Graduate Schemes
12	Success Stories and Testimonials
14	Our Values... Your Future
16	Get in touch

START HERE...

WELCOME TO YOUR FUTURE WITH ALLIANCE MEDICAL

As Europe's leading independent provider of imaging services, we set our standards high and when it comes to learning and careers, there's only excellence in our minds.

We pride ourselves on helping students and employees develop the highest level of technical expertise. We invest in the very best technology and work in friendly supportive teams. We create a happy and productive working environment for everyone.

When you start your journey with us you become part of the Alliance Medical family and that means you're supported every step of the way. What's more, you will have access to many different opportunities and pathways throughout your time with us. We aim to help each and every one of you reach your full potential.

Whether you're joining us on a placement, starting a new job or as a participant on our graduate scheme – we'll take care of you on this exciting new adventure and give you the best possible start in your career.



SAFE



OPEN



SECURE

*When you start your journey with us
**you become part of the Alliance
Medical family** and that means you
are supported every step of the way.*

LEARN

INVESTORS IN PEOPLE™
We invest in people Silver

HealthInvestor
Awards 2020
WINNER

Diagnostics provider
of the year

WHAT WE OFFER

CHOOSE US FOR YOUR ELECTIVE OR PLACEMENT

Whether it's for a few days or a few weeks, we provide high-quality, hands on elective opportunities for you.

The right choice for you!

WE ARE:

- ▶ Europe's leading independent provider of imaging services
- ▶ Close to your home or university
- ▶ Working in over 60 units in the UK
- ▶ Offering MRI/CT and PET-CT electives and placements

WHAT CAN ALLIANCE MEDICAL OFFER FOR YOUR ELECTIVE?

Alliance Medical consistently support Radiographers and Clinical Technologists in training and offer a flexible range of elective opportunities to ensure you find one that suits your aspirations.

Our electives will help you to develop real 'world of work' skills and connect with our network of Radiographers and Clinical Technologists. It also allows us to meet and encourage dedicated and talented Radiographers and Clinical Technologists at the start of their career.

YOUR OPTIONS

We offer experience in MRI/CT and PET-CT within our static and our mobile units. We can match your location to one of our services to design and provide an elective or placement to suit you.

YOUR ELECTIVE MAY INCLUDE:

MRI/CT

Introduction to MRI/CT

- ▶ Basic MRI/CT principles
- ▶ Patient preparation and safety
- ▶ Patient positioning
- ▶ Overview of equipment and coil handling
- ▶ Image quality - brain, knee and spine
- ▶ Procedures and protocols.

PET-CT

Introduction to PET-CT

- ▶ Basic PET-CT principles
- ▶ Patient preparation and safety
- ▶ Patient positioning
- ▶ Isotope production & Bio-distribution of the tracer
- ▶ Overview of equipment
- ▶ Procedures and protocols



“My elective was **brilliant**,
I learnt so much and made so
many connections and friends.”

MRI elective student

INSPIRE



HOW TO APPLY

STUDENTS...

It's so easy to apply with us, organise your elective today by emailing graduate@alliance.co.uk

Our dedicated team will put you in contact with one of our managers to discuss your requirements and process your request as quickly as possible.

IN YOUR EMAIL, TELL US:

- ▶ Where you would like to be based (static or mobile and chosen location)
- ▶ Your preferred dates for the placement - we can offer anything from 1 day to a full week
- ▶ If you are a 2nd or 3rd year student.

WE ALSO OFFER:

Undergraduate training placements

What's that?

These are similar to your elective, but would normally run for a longer period of time and would form an official part of your course. They may cover MRI/CT or PET-CT during your 1st and 2nd year with more focused learning objectives in the 3rd year of study. All of this depends on the university you are studying at and if Alliance Medical have a collaborative partnership with them to enable you to undertake your placements with us.

Which universities do we work with?

We are working with a number of universities across the UK to help to provide electives and training placement.

If you are a University/Course Director interested in collaborating with us to help you deliver undergraduate training placements or if you are interested in discussing other partnerships or projects such as commercial ones then please drop us a line via the graduate@alliance.co.uk email address and we will direct you to the best person to help with your query.



Careers Fairs

Keep an eye out for Alliance Medical at your University Careers fairs, virtual talks and at employability days. Chat to our friendly team - open up your future potential!

Getting better every day

SOME OF OUR LOCATIONS



LOOK AT OUR GRADUATE SCHEMES

We're offering exciting opportunities to graduates at our mobile and/or static units across the UK.

OUR GRADUATE SCHEME OFFERS YOU A:

- ▶ Permanent contract of employment
- ▶ Competitive starting salary with key salary uplifts linked to skill progression
- ▶ Role providing hands-on, high quality, patient care
- ▶ Rotation through different clinical areas
- ▶ £1000 student loan contribution (taxable benefit)
- ▶ Host of employee benefits such as 5 weeks holiday, discounted private health insurance, pension plan and company car (dependent on role).

PLUS, ALLIANCE MEDICAL

- ▶ Invest in the most up-to-date technology, so you'll gain experience on the latest scanning equipment.
- ▶ Have access to The Academy of Advanced Imaging through the School of Oncology at Christie Hospital - providing bespoke courses, such as; Dementia Training, Managing of Patient Conversations, Intravenous and Radiopharmaceutical Training and Essentials of PET-CT.
- ▶ Offers all students IV Canulation Training.
- ▶ Provides on the job clinical training supported by our bespoke clinical training pathways supported by our team of mentors and assessors.



YOUR KIND OF JOB...

You'll be joining Europe's leading independent imaging services provider, we look after our staff and our patients and strive to make a real difference through our work.

Successful applicants will become part of a dedicated and supportive team who are friendly, kind and highly skilled in their work. We offer an excellent work-life balance and promote a happy, healthy, open and honest work culture.

WHAT PATHWAYS DO WE OFFER?

We offer MRI/CT and PET-CT pathways over a 1 or 2-year scheme. The scheme you join is determined by any prior knowledge or experience in cross sectional imaging modalities.

The Scheme is open to Graduates who are 0-1-year post qualified.

GRADUATE SCHEME STEPS INCLUDE:

- ▶ **0-6 Months** - Induction and introduction, basic essential of training and clinical practice
- ▶ **6-12 months** - Consolidation of and building upon your initial training
- ▶ **12-18 months** - Leadership development and advanced scanning techniques
- ▶ **2 years+** further responsibilities, career development and progression.
- ▶ Incremental pay at key points during the scheme, so you can see your salary increase with your skills.

WHAT WILL I GET FROM THE GRADUATE PROGRAMME?

The answer is... experience and opportunity. Both are essential to help you grow professionally.

We also ensure you receive continuous training to develop your skills for your future career with us. The scheme is designed to get the best out of you and you'll be given a challenging hands-on role, working in a diverse, working environment.

You'll be welcomed into the Alliance Medical family and encouraged to make your contribution to our organisation which is successfully built on teamwork and professionalism.

You'll be supervised and mentored with frequent reviews and receive excellent training tailored to your skills and what you're hoping to achieve in your career. There will be many opportunities for you to develop your expertise and secure valuable professional experience.

Our facilities are second to none. We invest heavily in new machines and technology to stay at the forefront of diagnostics and to bring our patients peace of mind

PET-CT Lead

DON'T JUST TAKE OUR WORD FOR IT...

HAMZAH
AMJAD

I choose this graduate scheme because of its flexibility and fast progression.

After graduating, I was able to progress extremely quickly due to the course structure and staff training. Plus, I get to travel to many different cities as well as the opportunity to get a company car!

"Within 14 months I became a Lead, all the staff are wonderful and love to train and share their knowledge. Extra courses are always available to do, and we're encouraged to partake in training as much as possible."

With my skills developing quickly I also had the opportunity to learn CT which is great for my career as it is a valuable extra skill that allows me to move in different directions.

One of the great things about Alliance is the high level of collaboration and learning – we are always working as a team to provide the best patient care and there are endless opportunities to develop and learn which leads to progression fast.

I knew that I wanted to specialise in CT, but in the NHS you have to "earn your stripes" and it can take a few years to get the opportunity. Not at Alliance Medical.

They are investing in staff and encouraging progression right from the start. I started as a graduate CT (mobile) Radiographer in training shifts, with an allocated mentor.

"Now 2 years later, I'm a senior CT Radiographer! I have trained to scan on 3 different platforms (GE, Canon and Siemens) and I'm comfortable building and adapting protocols on them all. I am trained in IV cannulation, ILS trained, a Radiation Protection Supervisor, a mentor, and a site lead for the Nightingale hospital in Harrogate. It has been an exciting two years!"

The management team are always available and approachable and encourage you to move in any direction you're interested in. For example, the opportunity to take on a site lead role at the Nightingale Hospital in Harrogate, an extremely insightful experience to see what is involved in setting up a service like that; I provided a review of a proposal for a new CT pocket guide companion book due to be published which our Head of CT clinical services is co-author, attended various in-house courses and an external angiography training course, and I have become involved in image quality audits and attended careers fairs too.

KATE
PRENDERGAST

OUR VALUES

At Alliance Medical, our core values underpin all that we do. When you become a member of our team, you will join us in living these values every day, to ensure the best care for our patients.

- ▶ **COLLABORATION**
- ▶ **EXCELLENCE**
- ▶ **EFFICIENCY**
- ▶ **LEARNING**
- ▶ **OPENNESS**



EXPERIENCE

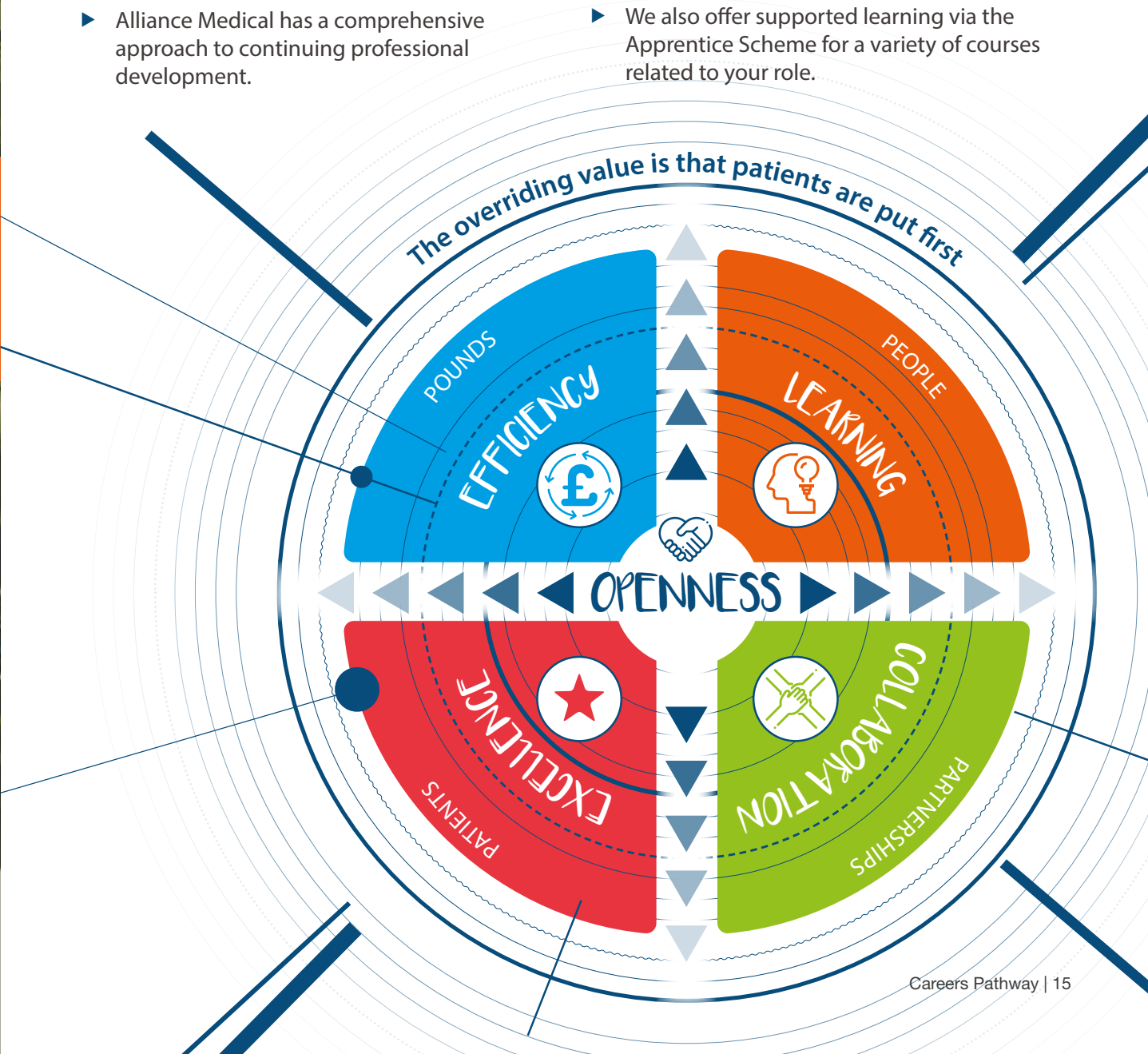
YOUR FUTURE

If you look below the surface of any successful organisation, you'll find a great team and Alliance Medical is no exception.

So, we work hard to reward and encourage your efforts with career and development opportunities.

- ▶ Alliance Medical has a comprehensive approach to continuing professional development.

- ▶ You'll receive a thorough introduction when you join our team, as well as countless opportunities thereafter to develop your knowledge and skills.
- ▶ This could range from enhancing your knowledge in a particular area through to secondment and project opportunities.
- ▶ We also offer supported learning via the Apprentices Scheme for a variety of courses related to your role.





GET IN TOUCH...

 alliancemedical.co.uk

 graduate@alliance.co.uk

 01926 482 000

 [@alliancemedica1](https://twitter.com/alliancemedica1)

 [/alliancemedicaltd](https://www.facebook.com/alliancemedicaltd)